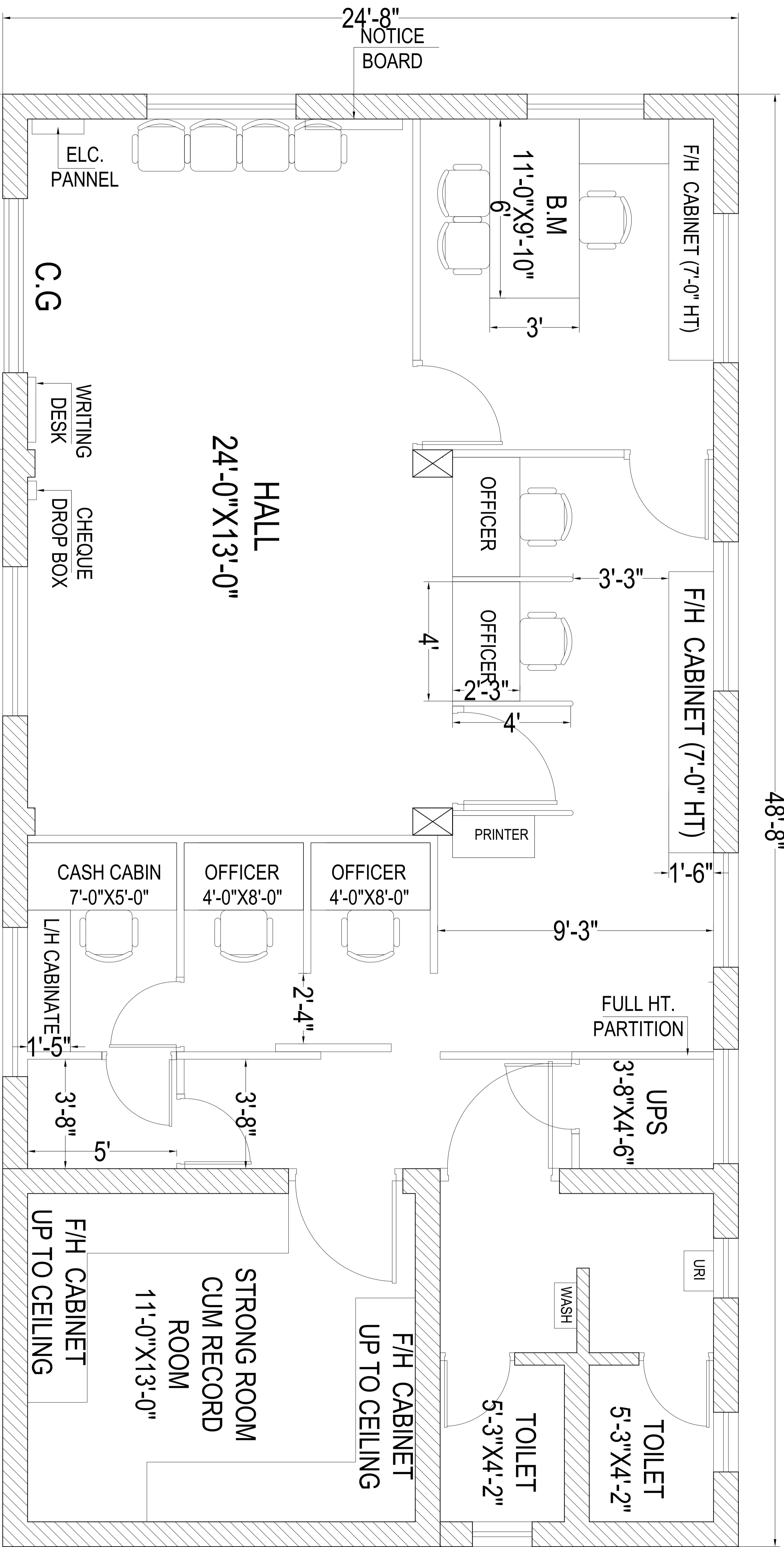


48'-8"



**GROUND FLOOR**  
**AREA = 962.67 SQ. FT.**

ROAD

GATE

R.S

C.G

WRITING  
DESK

CHEQUE  
DROP BOX

ELC.  
PANNEL

24'-8"  
NOTICE  
BOARD

F/H CABINET (7'-0" HT)

11'-0" X 9'-10"

B.M

3'

OFFICER

3'-3"

F/H CABINET (7'-0" HT)

OFFICER

3'

PRINTER

9'-3"

FULL HT.  
PARTITION

UPS  
3'-8" X 4'-6"

URJ

WASH

TOILET  
5'-3" X 4'-2"

TOILET  
5'-3" X 4'-2"

F/H CABINET  
UP TO CEILING

STRONG ROOM  
CUM RECORD  
ROOM  
11'-0" X 13'-0"

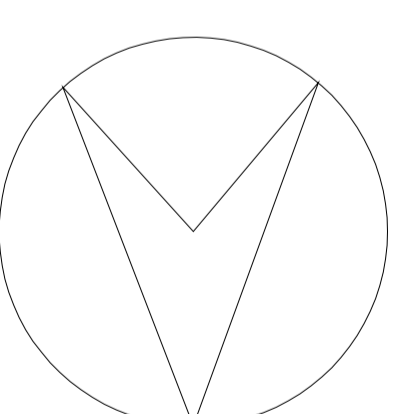
F/H CABINET  
UP TO CEILING

HALL  
24'-0" X 13'-0"

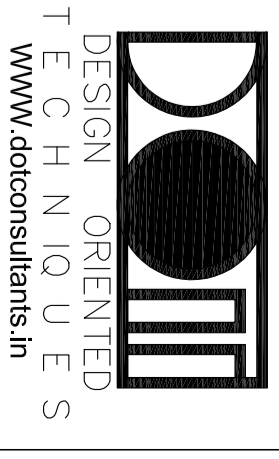
**EXISTING INTERIOR LAYOUT FOR CANARA BANK AT  
 MARWARI COLLEGE, RANCHI.**

SHEET NO - ARC/01

DATE - 2025.01.07



Design Oriented Techniques  
 303 Urmila apartment,  
 Thapakra, Ranchi-834001  
 email:dotconsultants@gmail.com  
 Web:www.dotconsultants.in  
 Tel:9934114276,9471550077



DESIGN ORIENTED  
 TECHNIQUES  
 WWW.DOTCONSULTANTS.IN