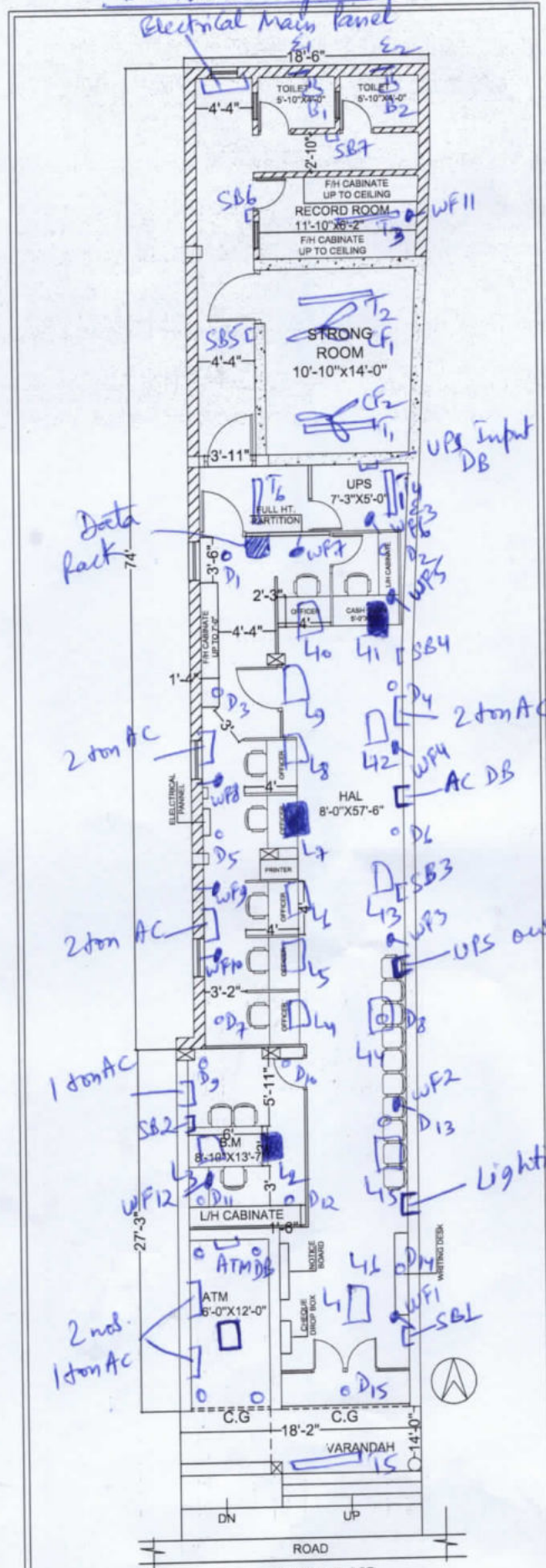


Electrical layout  
Electrical main panel



- SB1 to SB7 → Switch Boards
- T<sub>1</sub> to T<sub>6</sub> → 22w LED tubelights
- B<sub>1</sub>, B<sub>2</sub> → 9w LED Bulb
- E<sub>1</sub> to E<sub>3</sub> → Exhaust Fan 225 mm
- CF<sub>1</sub> to CF<sub>2</sub> → Ceiling Fan 1200 mm
- D<sub>1</sub> to D<sub>15</sub> → 12w LED Downlight
- L<sub>1</sub> to L<sub>6</sub> → 36w LED 2x light
- → lights Connected with UPS power
- ▽ WF1 to WF12 → 300mm wall Mounted Fan

GROUND FLOOR  
 AREA = 1453.36 SQ FT.