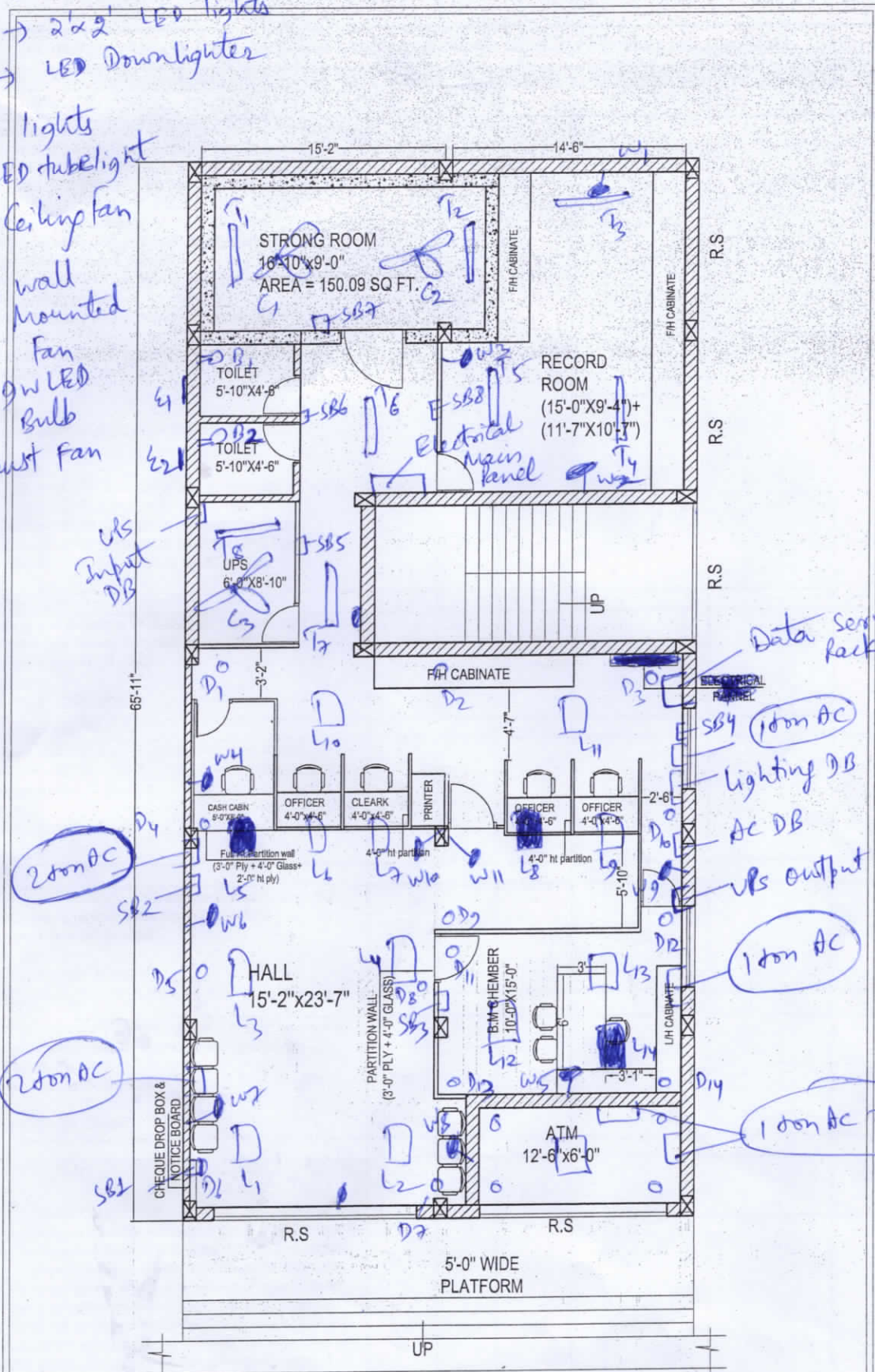


SB1 to SB8 → Switch Boards
 L1 to L4 → 2'x2' LED lights
 D1 to D14 → LED Downlighter
 ■ → UPS lights
 T1 to T8 → LED tubelight
 C1 to C3 → Ceiling fan
 W1 to W11 → wall mounted Fan
 B1 to B2 → gw LED Bulb
 E1, E2 → Exhaust fan



AREA = 1652.16 SQ FT.

PROPOSED INTERIOR LAYOUT FOR
CANARA BANK SISAI BRANCH GUMLA.

SHEET NO - ARC/01

DATE - 2024.07.11



Design Oriented Techniques
 303 Uruli apartment,
 Thiruvananthapuram, Kerala-695021
 email: doct@canara.bank@gmail.com
 Website: doct.com, doct.in
 Tel: 9954114276, 9471559077



DESIGN ORIENTED
 TECHNIQUES
 WWW.CANARA.BANK.IN