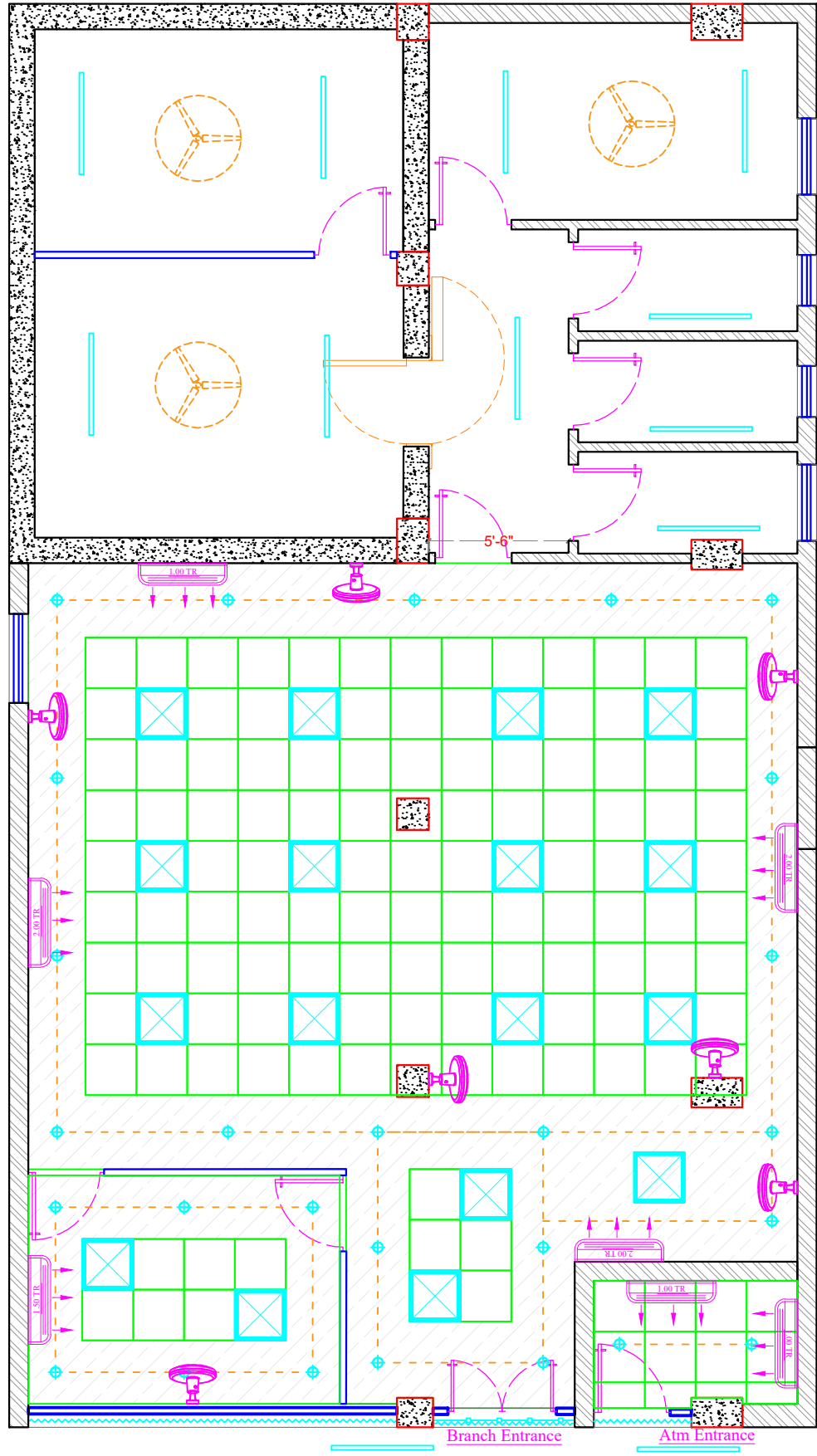


LEGEND			
S.NO	PARTICULARS	DESCRIPTION	COUNT
1		Supplying, fixing, testing and commissioning of 15 W LED commercial type down lighter of make As specified in tender document or approved by Architect.	27
2		FULL GLOW 2 X 2 LED 36 W Slim Smart Panel of make As specified in tender document or approved by Bank/Architect.	17
3		Supplying, fixing, testing and commissioning of 1X18/40 watts T5 led light fixture Wall/ Ceiling mounted (Philips, havelis) Tube Light point @ 8'-0" ht.	12
4		Supply & Fixing of 1200 mm sweep Crompton Make High Speed Ceiling fan with standard down rod, all accessories Electrical connections. Including fixing materials required.	3
5		Supply & Fixing of 400 mm sweep Wall mounted fan with 3 pin Plug on the lead wire of each fan. all accessories Electrical connections. Including fixing materials required.	7

2.0Tr		AIR CONDITION	3 No's
1.5Tr		AIR CONDITION	1 No's
1.0Tr		AIR CONDITION	3 No's



PROJECT:
**Proposed RCP Layout Plan For
 Canara Bank at Narsapur Branch
 and Atm.**

SHEET TITLE:
PROPOSED RCP LAYOUT PLAN

1. This Drawing is the property of Design Integration No portion of this drawing should be copied or used elsewhere without the permission of the Architect.
 2. Only written dimension to be followed and should not be scaled.

OPTION-1

Date:- 31-08-2024

Drawn :- Pavan Konda

Checked :- Akash

Sheet No - 02

DESIGN INTEGRATION
 Hyderabad Office: H.No:1-79/1, Kothapet, Near Balapur, Balapur Mandal, RR District, Hyderabad, Telangana -500005.
 Mob:8125196178; 9553495945.
 E-mail: akash.designintegration@gmail.com

ARCHITECTURE & INTERIORS