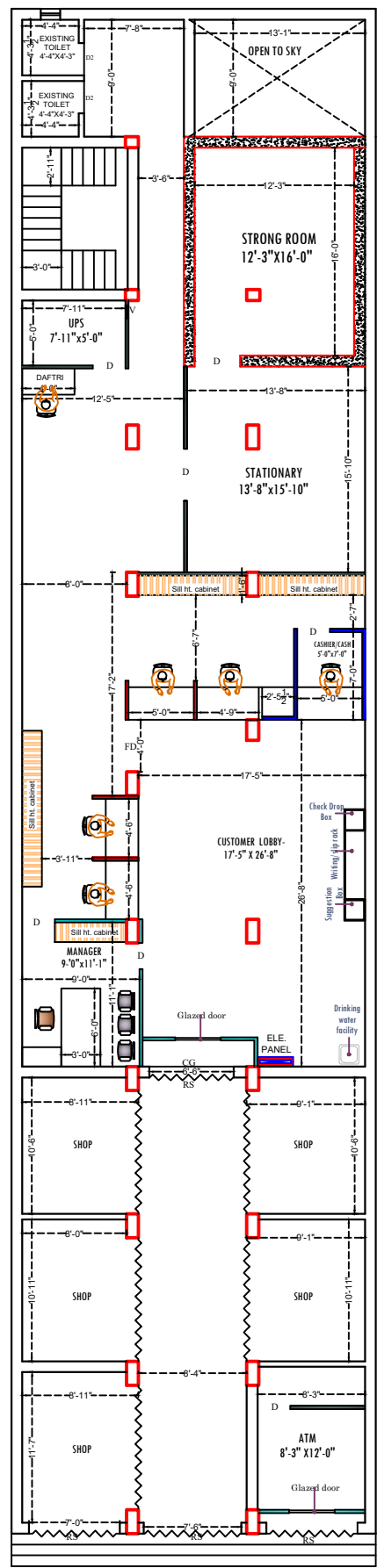


[Red outline]	HALF HT PARTITION
[Blue outline]	7' HT PARTITION
[Light blue fill]	GLAZED FULL HT PARTITION
[Dark blue fill]	SOLID FULL HT PARTITION
[Light blue diagonal lines]	SEMI GLAZED FULL HT PARTITION
[Dark blue diagonal lines]	CASHIERS COUNTER WALL PANELLING



TOTAL INTERNAL BRANCH AREA = 1770.00 sq.ft.(Approximate)
 TOTAL CARPET AREA BRANCH AREA = 1679.00 sq.ft.(Approximate)
 TOTAL ATM CARPET AREA BRANCH AREA = 99.00 sq.ft.(Approximate)
 TOTAL CARPET AREA (BRANCH-ATM) AREA = 1778.00 sq.ft.(Approximate)

BANKING HALL AREA = 1481.00 sq.ft.(Approximate)
 CUSTOMER LOBBY AREA = 521.00 sq.ft.(Approximate)

ROOF HT 11'-0"
 BEAM HT 10'-0"



ROAD

GROUND FLOOR PLAN

PROJECT:- PROPOSED INTERIOR LAYOUT OF CANARA BANK AT- SIMRI BRANCH	REVISION:-	Sheet No. - FURNITURE LAYOUT PLAN
	No. Date :-	Scale : Date :-
	N.T.S 13/11/2024	Drawn by :- RASHUL SINGH
		Checked by :- Ar. Anshu Kulkarni
	Architects :-	ARTCON DESIGN CONSULTANTS ARCHITECTS, ENGINEERS REGD. NO. 221277, 221278, 221279 G-04 Laxmi Palace, Mira Compound, Boring Road - P O H A, B O D D I 1st Floor, 221277, simri@artcon.com 91 9346 717756 artcondesign@artcon.com